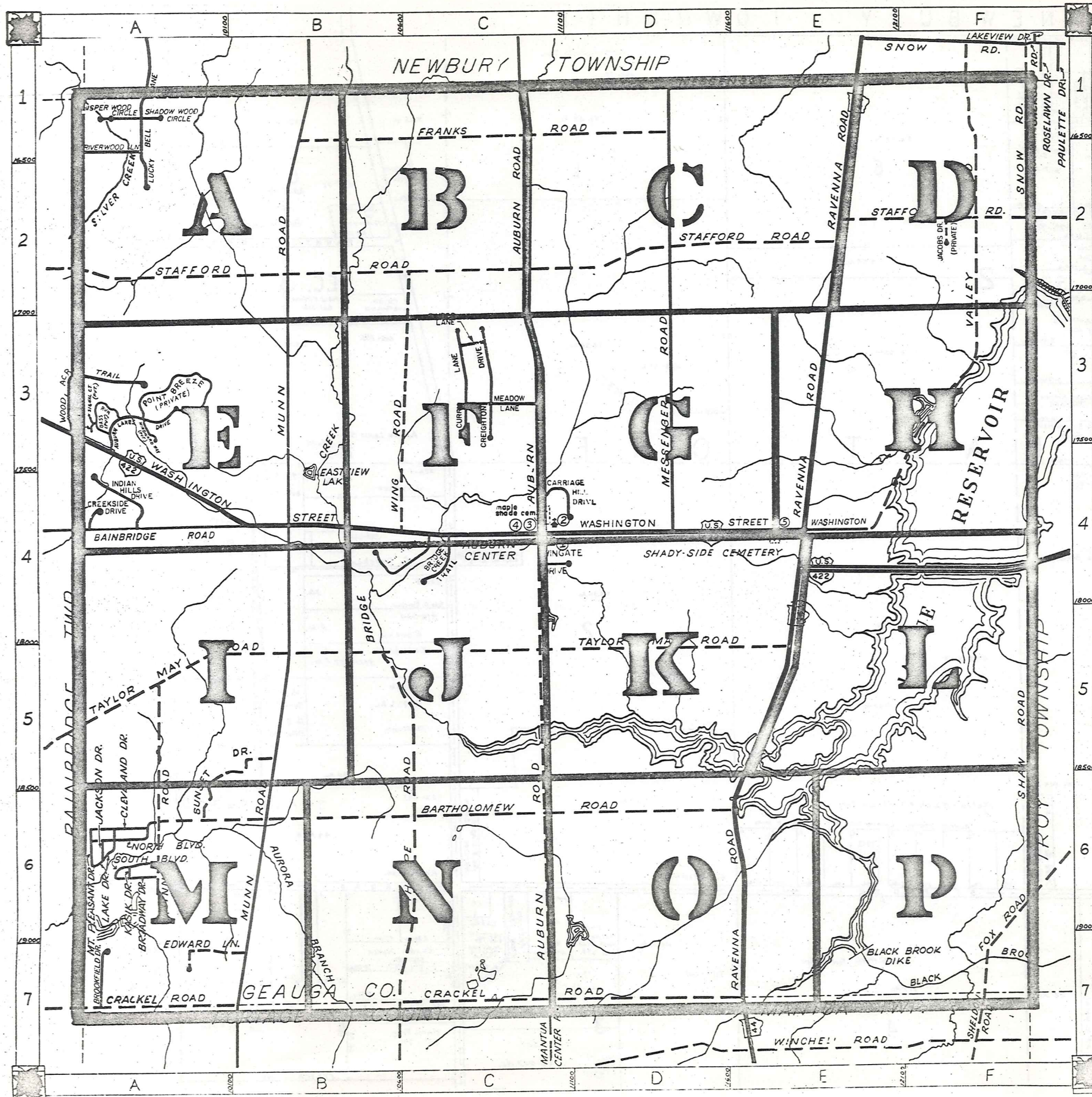


# ROAD INDEX



<b>A</b> AUBURN ROAD	<b>C1-C7</b>	<b>J</b> JACKSON DRIVE JACOBS DRIVE (PVT.)	<b>A6</b> <b>F2</b>	<b>S</b> SHAW ROAD SNOW ROAD SOUTH BLVD. STAFFORD RD. SUNSET DRIVE SHADOW WOOD CIRCLE	<b>A1</b> <b>F4-F6</b> <b>F1-F2</b> <b>A6</b> <b>A2-E2</b> <b>B5-A6</b> <b>A1</b>
<b>B</b> BAINBRIDGE ROAD BARTHOLOMEW RD. BROADWAY DRIVE BROOKFIELD DRIVE BRIDGE CREEK TR.	<b>A4</b> <b>A6-D6</b> <b>A6</b> <b>A7</b> <b>C4</b>	<b>K</b> KASIK DRIVE	<b>A6</b>	<b>T</b> TAYLOR MAY RD. THORPE ROAD TIMBER LN	<b>A5-E5</b> <b>B5-B7</b> <b>C3</b>
<b>C</b> CLEVELAND DRIVE CRACKEL ROAD CREIGHTON DR. CURLY LN CREEKSIDE DR. CARRIAGE HILL	<b>A6</b> <b>A7-E7</b> <b>C3</b> <b>C3</b> <b>A4</b> <b>D3</b>	<b>L</b> LAKE DRIVE LUCKY BELL LN LONGVIEW TR.	<b>A6</b> <b>A1</b> <b>C4</b>	<b>U</b>	
<b>D</b>		<b>M</b> MESSENGER RD. MT. PLEASANT DR. MUNN RD. MEADOW LN.	<b>E1-D4</b> <b>A6</b> <b>B1-B7</b> <b>C3</b>	<b>V</b> VALLEY ROAD	<b>F1-E4</b>
<b>E</b> EDWARD LANE	<b>A7</b>	<b>N</b> NORTH BLVD.	<b>A6</b>	<b>W</b> WASHINGTON ST. WING ROAD WHISPER WOOD CIRCLE WOOD ACRE TR. WINGATE DRIVE	<b>A3-E4</b> <b>C3-C4</b> <b>A1</b> <b>A3</b> <b>C2</b>
<b>F</b> FOX ROAD FRANKS ROAD	<b>F6-F7</b> <b>B1-D1</b>	<b>O</b>		<b>X</b>	
<b>G</b>		<b>P</b>		<b>Y</b>	
<b>H</b>		<b>Q</b> QUINN ROAD	<b>A5-A6</b>	<b>Z</b>	
<b>I</b>		<b>R</b> RAVENNA RD. RIVERWOOD LN.	<b>E1-E7</b> <b>A1</b>		
<b>J</b>		<b>T</b> TAYLOR MAY RD.	<b>A4</b>		

- ① AUBURN ELEM. SCHOOL
- ② AUBURN COMMUNITY CHURCH
- ③ AUBURN TOWN HALL
- ④ AUBURN VOL. FIRE DEPT.
- ⑤ STATE HIGHWAY GARAGE (SUB-STATION)

## AUBURN TOWNSHIP

SCALE: 1" = 2000'

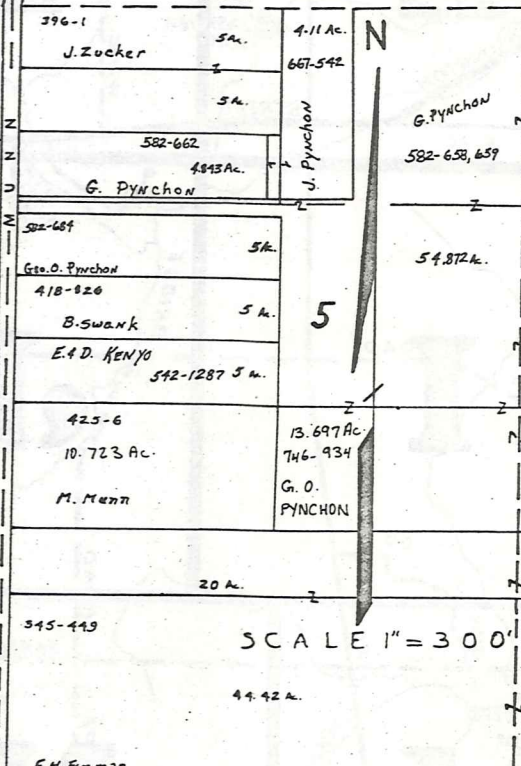
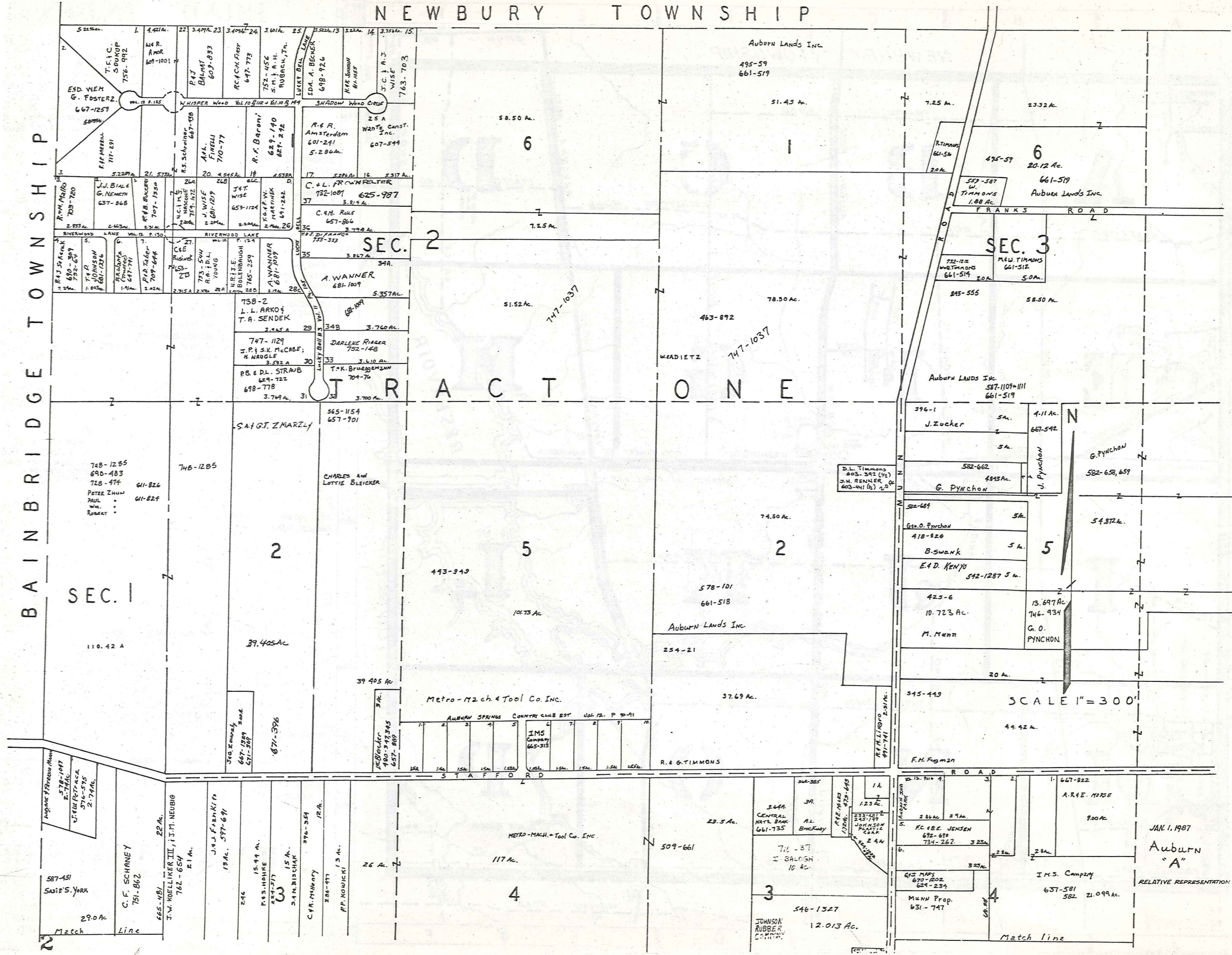
GEORGE PHILLIPS  
GEAUGA COUNTY ENGINEER

- UNPAVED ROAD
- PAVED ROAD
- TOWNSHIP LINE
- COUNTY LINE



NEWBURY TOWNSHIP

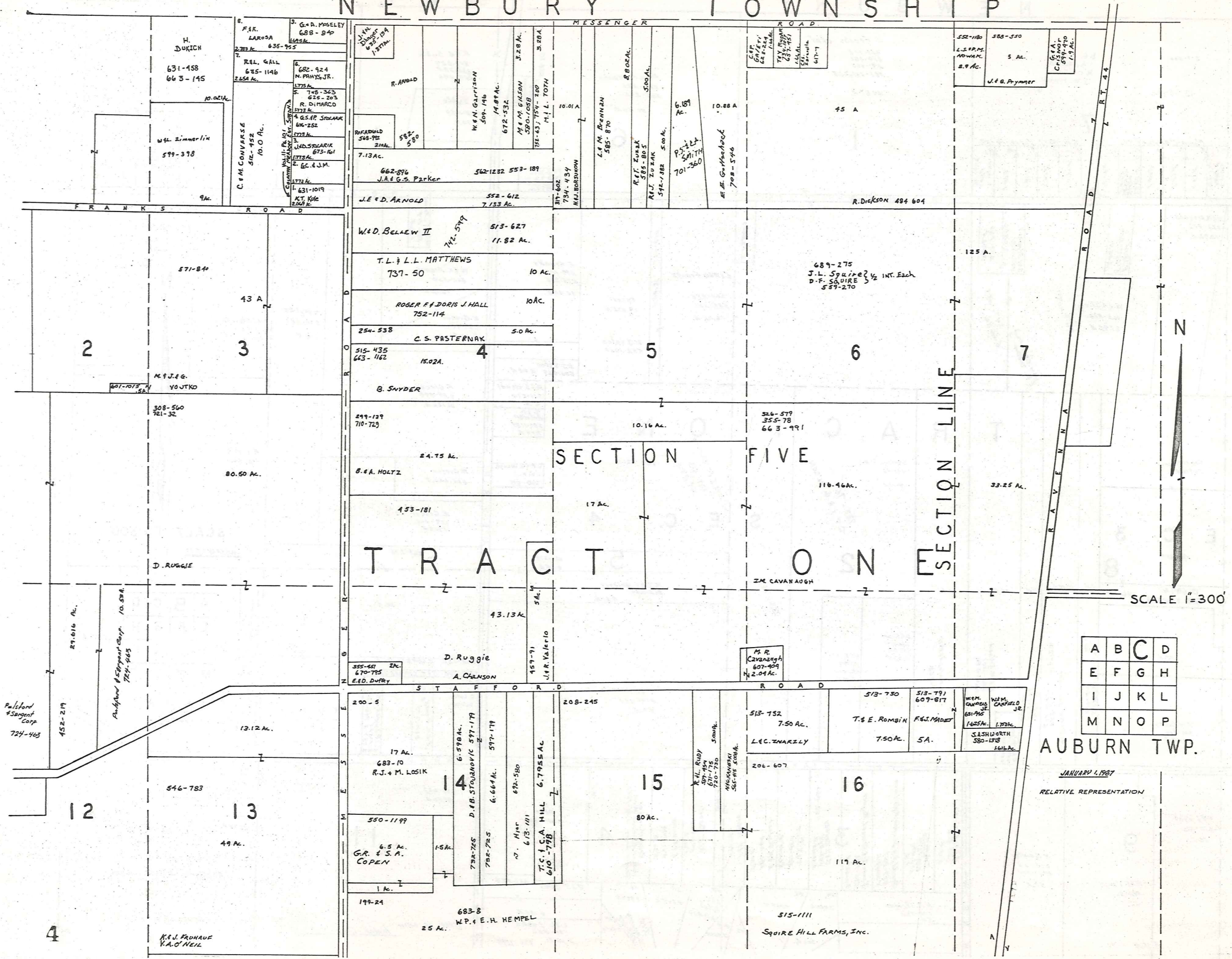
BAINBRIDGE TOWNSHIP



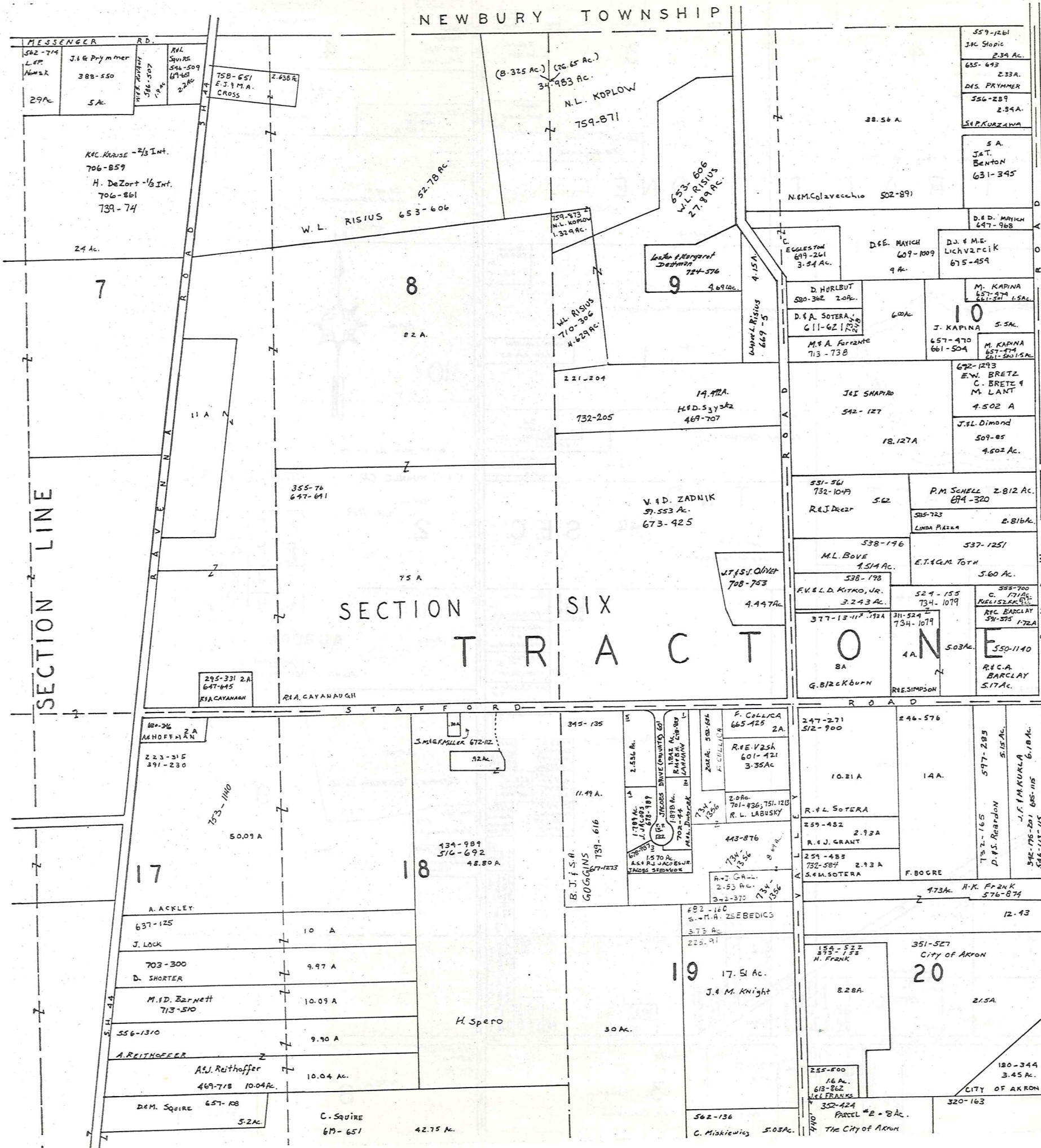
JAN. 1, 1987  
Auburn  
"A"  
RELATIVE REPRESENTATION



# NEWBURY TOWNSHIP



A	B	C	D
E	F	G	H
I	J	K	L
M	N	O	P



T R O Y T O W N S H I P



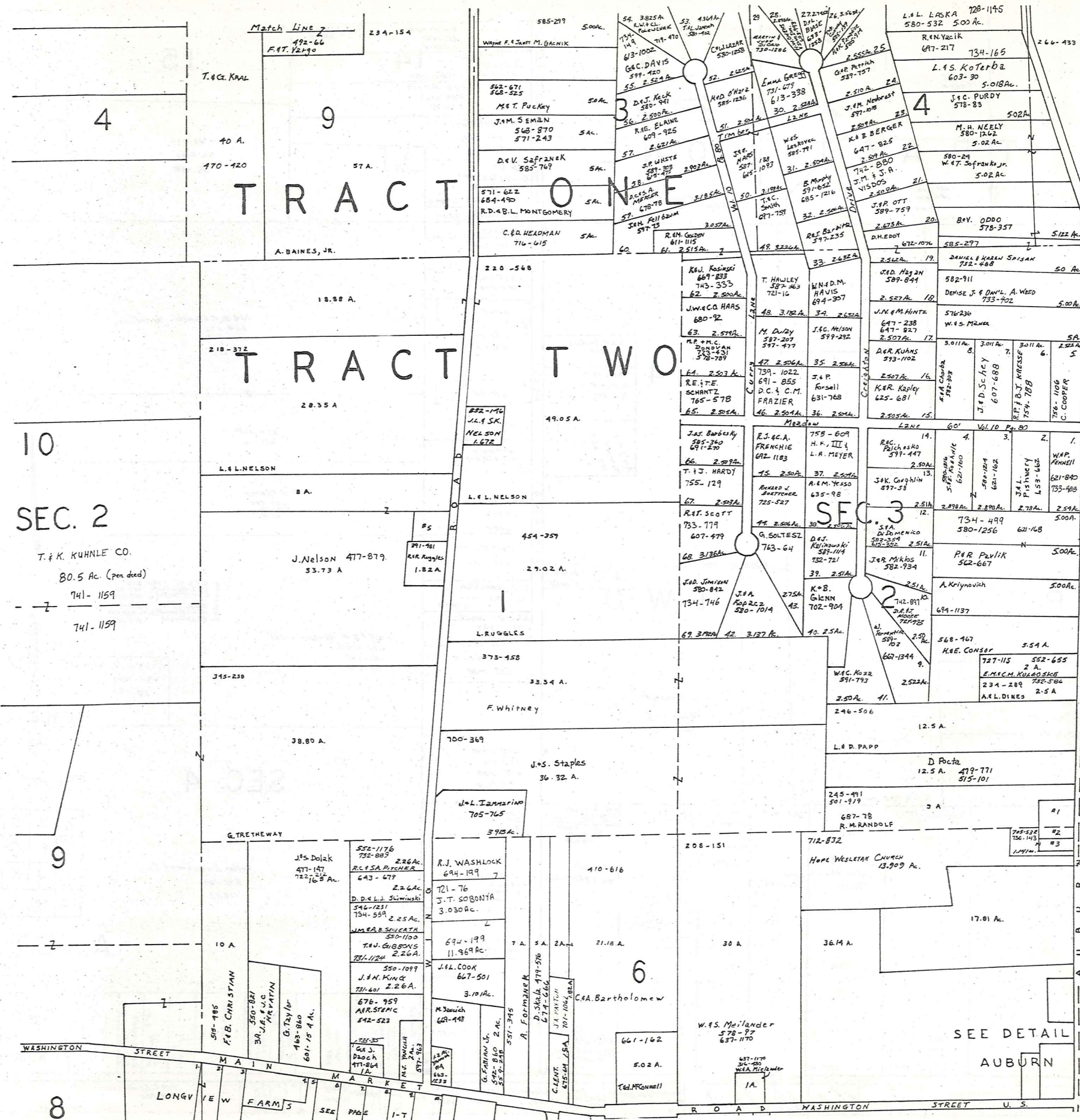
SCALE 1" = 300'

JANUARY 1, 1987  
RELATIVE REPRESENTATION

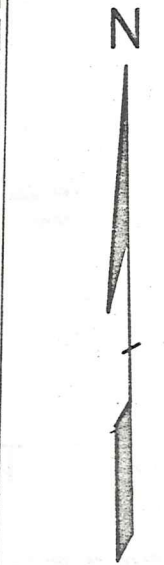
A	B	C	D
E	F	G	H
I	J	K	L
M	N	O	P

AUBURN TWP.





Match Line



SCALE 1"=300'  
JAN 1, 1987

A	B	C	D
E	F	G	H
I	J	K	L
M	N	O	P

AUBURN TWP.  
RELATIVE REPRESENTATION

- No. 1. R. Randolph 752-305 1.1 Ac.
- 2. D.P. Shiever 737-1316 0.46 Ac.
- 3. G.J. J.J. Matter 734-143 .55 Ac.
- 4. M.M. Vanah 663-1233 1.2 Ac.
- 5. B. Whitney 237-123 712 Ac.
- 7. B.H. Van Dyke 302-191 1.1 Ac.

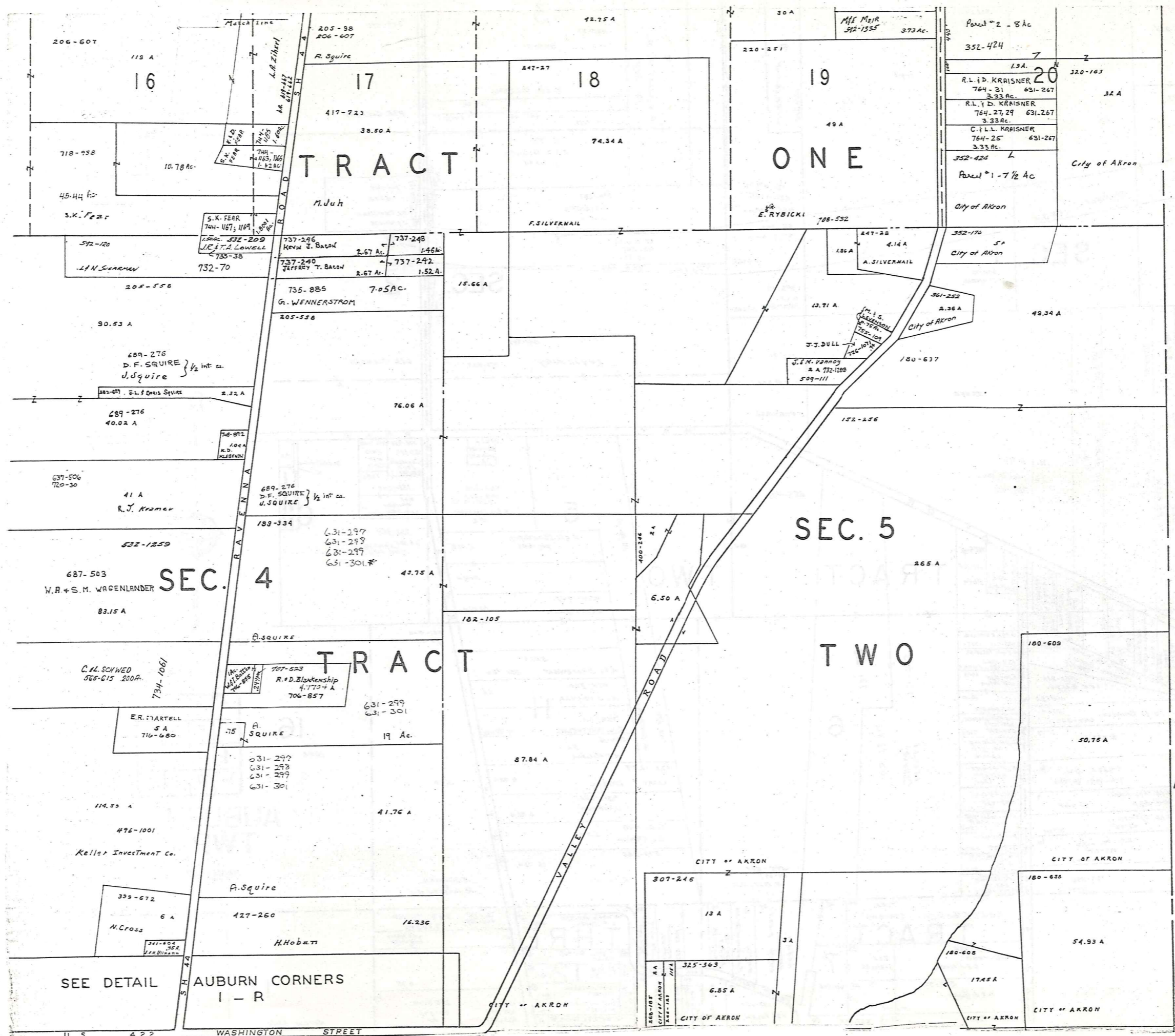
SEE DETAIL OF  
AUBURN  
CENTER  
I Q

WASHINGTON STREET U.S. 422

8

7





TROY TOWNSHIP

SCALE 1" = 300'

A	B	C	D
E	F	G	H
I	J	K	L
M	N	O	P

AUBURN TWP.

JANUARY 1, 1927  
RELATIVE REPRESENTATION

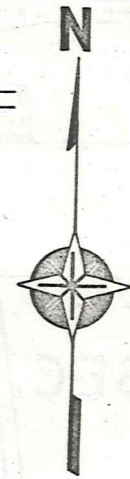
BAINBRIDGE TOWNSHIP

SEC. 1

SEC. 2

TRACT TWO

TRACT THREE

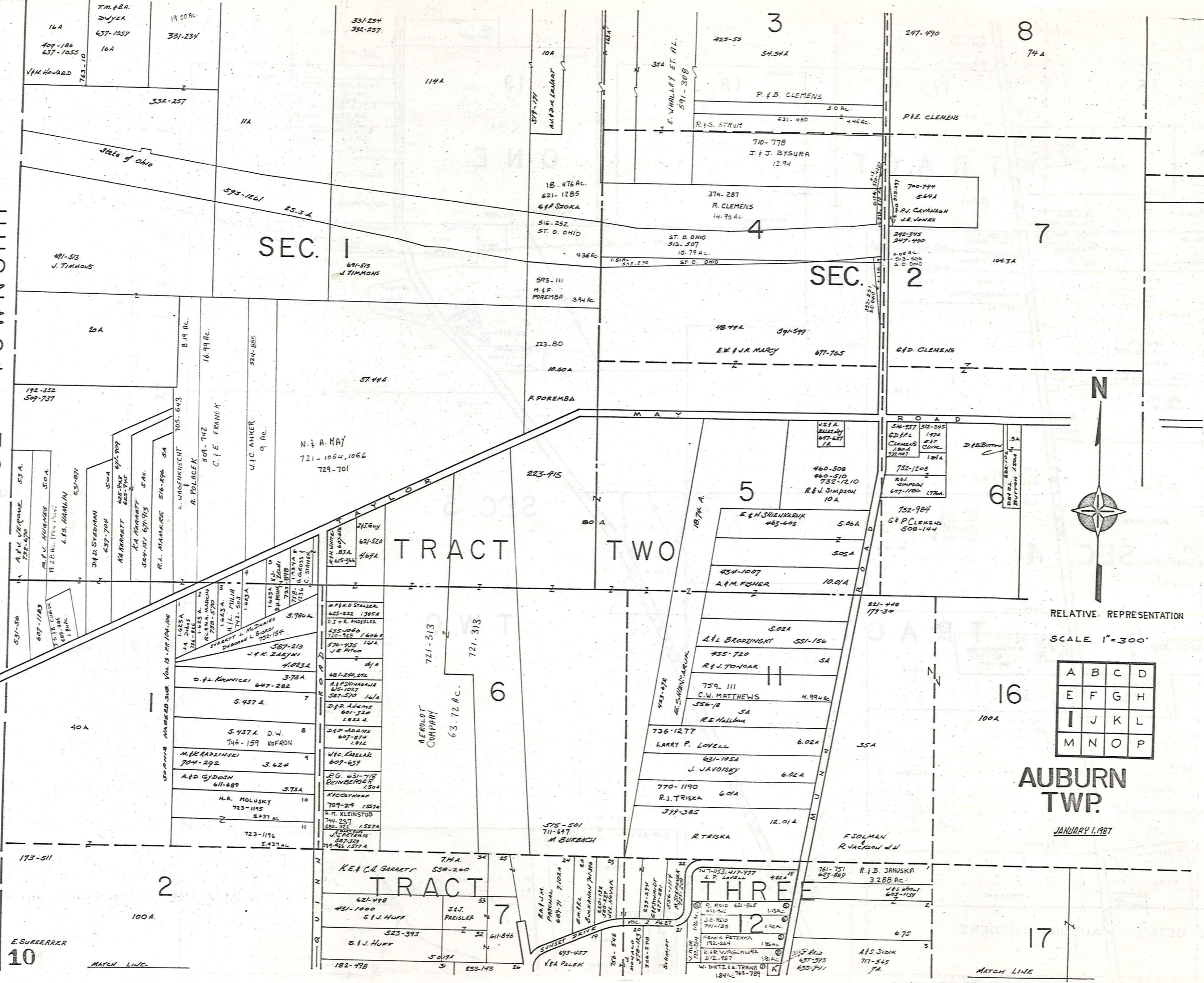


RELATIVE REPRESENTATION  
SCALE 1"=300'

A	B	C	D
E	F	G	H
I	J	K	L
M	N	O	P

AUBURN TWP.

JANUARY 1, 1987



E. SURRERRER  
10

MATCH LINE

MATCH LINE

Match Line

Match Line

SEE DETAIL SHEET I-Q  
AUBURN CENTER

# TRACT TWO

## SEC 3

## SEC. 2

# TRACT THREE

## AUBURN TWP.

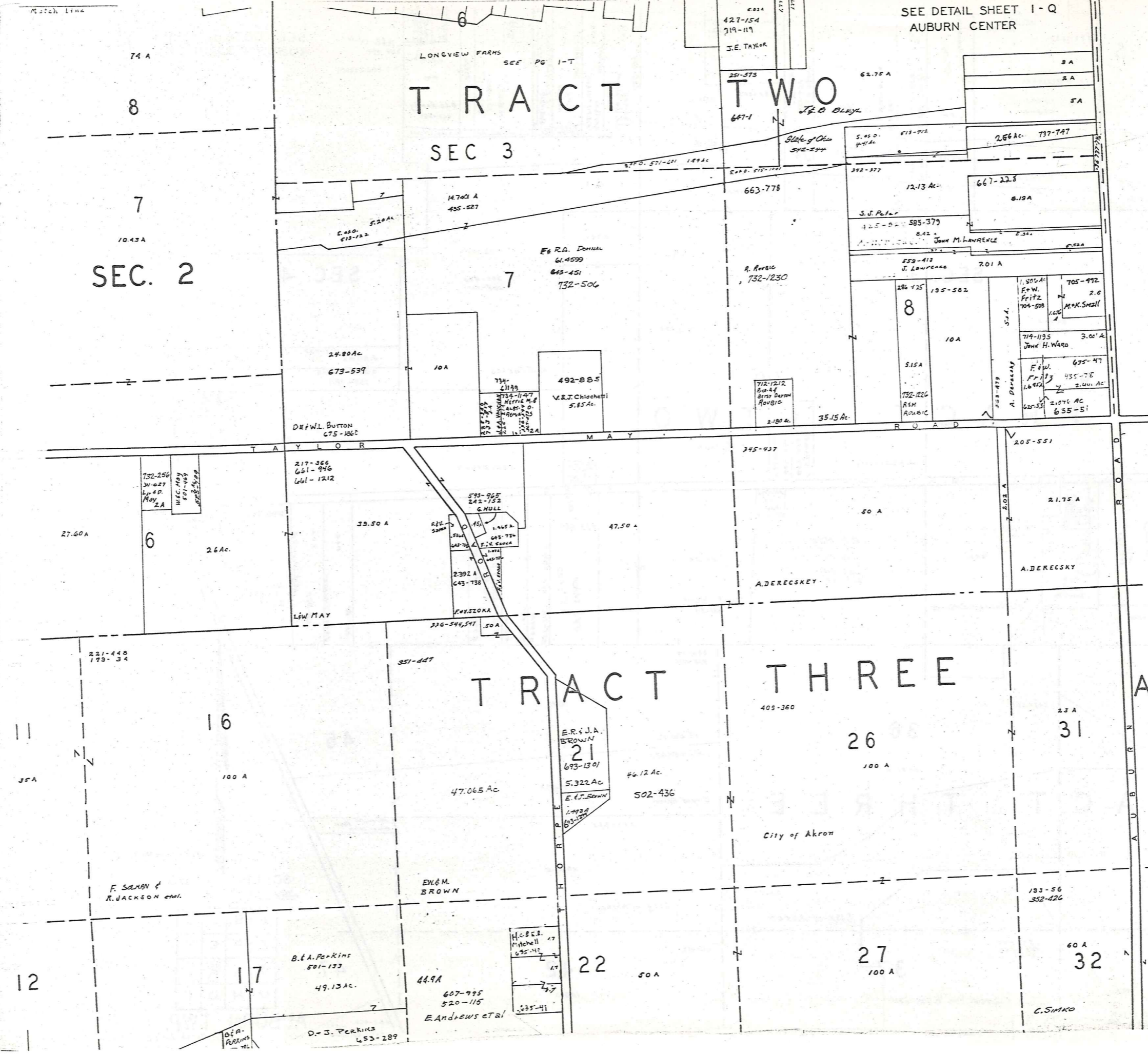
SCALE 1"=300'

A	B	C	D
E	F	G	H
I	J	K	L
M	N	O	P

JANUARY 1, 1987

RELATIVE REPRESENTATION

MATCH LINE



74 A

8

7

10.43 A

## SEC. 2

7

24.80 Ac  
673-539

10 A

492-885  
V.R.J. Chiochetti  
5.85 Ac.

D.R. Button  
675-1862

217-366  
661-946  
661-1212

27.60 A

6

2.6 Ac.

39.50 A

47.50 A

579-965  
242-152  
G. MULL

2392 A  
643-738

F.W. SZOKA

336-544, 541

A. DERECSKY

205-551

21.75 A

A. DERECSKY

221-448  
179-34

16

100 A

F. SAMAN &  
R. JACKSON et al.

E.W. & M.  
BROWN

E.R. & J.A.  
BROWN  
21  
693-1301  
5.322 Ac

E.J. BROWN

47.065 Ac

46.12 Ac

502-436

City of Akron

405-360

26

100 A

23 A

31

12

17

B.A. Perkins  
501-133

49.13 Ac.

44.9 A

607-995  
520-115

E. Andrews et al

22

50 A

27

100 A

60 A

32

C. SIMKO

427-154  
719-119  
J.E. TAYLOR

251-573

647-1

J.F. O'LEARY

62.75 A

3 A

2 A

5 A

2.66 Ac. 737-747

5.05 Ac. 613-712

12.13 Ac.

667-228

8.19 A

S.J. Peter

425-824 585-379

8.42 A

JOHN M. LAWRENCE

559-412

J. Lawrence

7.01 A

284 725

135-582

8

515 A

10 A

732-226

ARM

ROUBIC

35.15 Ac.

1.80 Ac.

F.W. Fritz

704-508

2.6

M.R. Small

714-1195

JOHN H. WARD

3.00 A

675-47

F.W. Fritz

435-78

2.00 Ac.

635-53

2,076 AC

635-51

A. DERECSKY

205-551

2.175 A

A. DERECSKY

2.03 A

2.03 A

2.03 A

2.03 A

2.03 A

2.03 A

2.03 A

2.03 A

2.03 A

2.03 A

2.03 A

2.03 A

2.03 A

2.03 A

2.03 A

2.03 A

2.03 A

2.03 A

2.03 A

2.03 A

2.03 A

2.03 A

2.03 A

2.03 A

2.03 A

2.03 A

2.03 A

2.03 A

2.03 A

2.03 A

SEE AUBURN

DETAIL I-Q CENTER

SEE DETAIL I-R AUBURN CORNERS

5

SEC. 3

SEC. 4

TRACT TWO

TRACT THREE

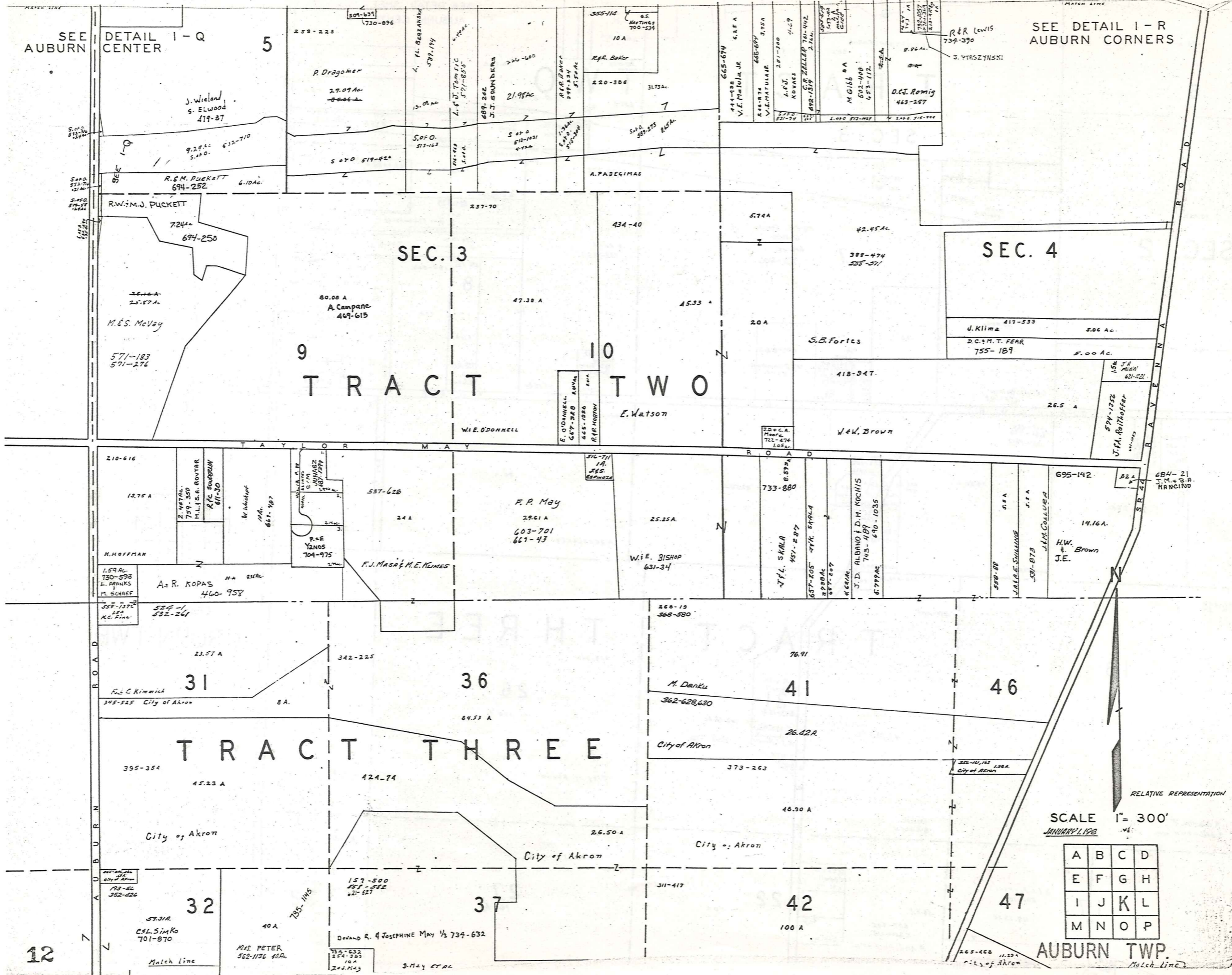
SCALE 1" = 300'

JANUARY 1, 1928

A	B	C	D
E	F	G	H
I	J	K	L
M	N	O	P

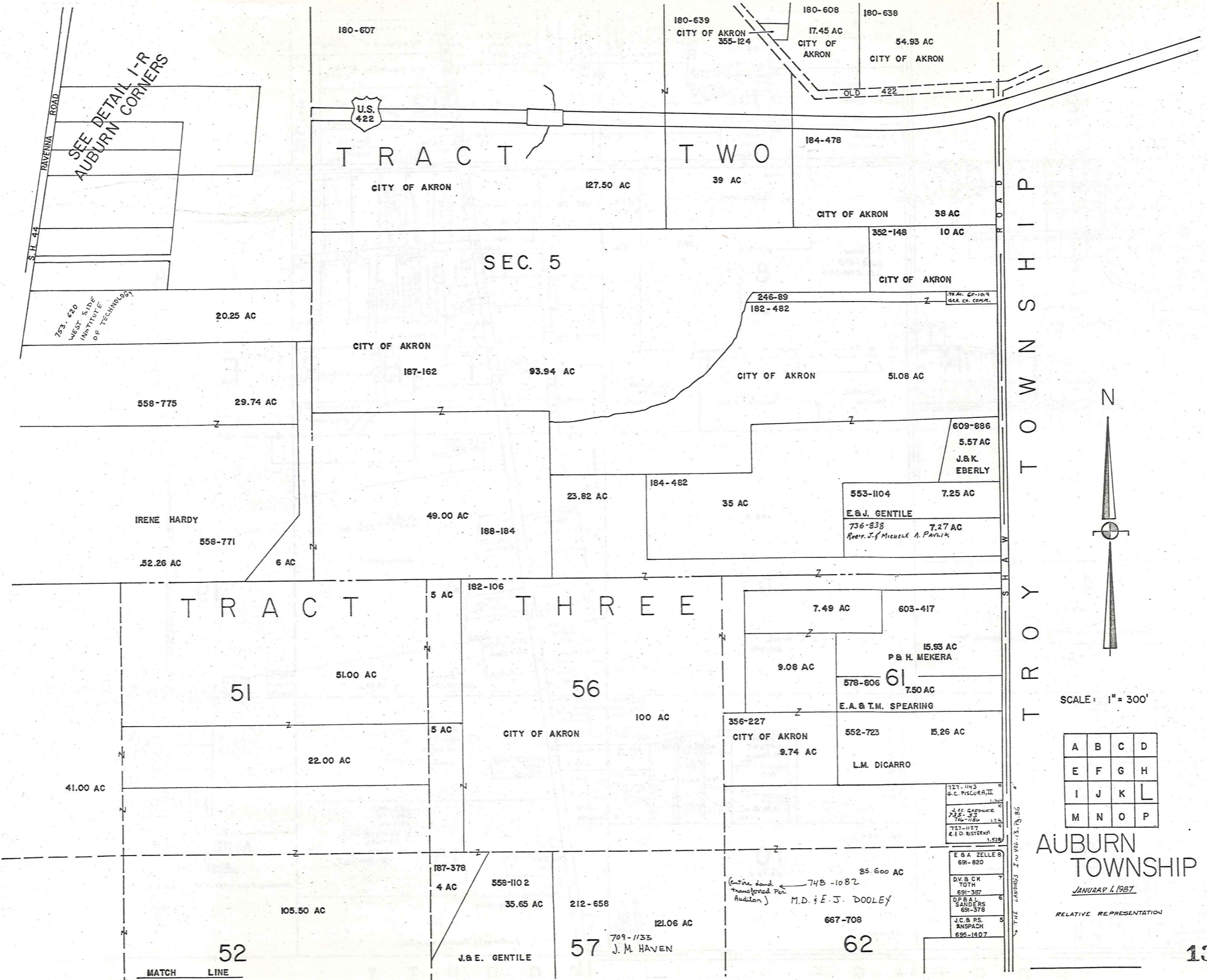
AUBURN TWP.

12



RELATIVE REPRESENTATION

J. Wieland  
 S. ELWOOD  
 419-87  
 9.29 AC  
 5.10 AC  
 532-710  
 R.M. PUCKETT  
 694-252  
 6.10 AC  
 R.W. M.J. PUCKETT  
 724-  
 694-250  
 26.12 AC  
 25.87 AC  
 M.E.S. McVay  
 571-183  
 571-276  
 237-70  
 434-40  
 574A  
 42.95 AC  
 388-474  
 558-571  
 S.B. Fortes  
 418-947.  
 J. Klimz  
 417-533  
 5.06 AC.  
 D.C. & M.T. FEAR  
 755-189  
 5.00 AC.  
 26.5 A  
 J.F.A. Rothoffer  
 579-1232  
 621-421  
 571-183  
 571-276  
 210-616  
 12.75 A  
 H. HOFFMAN  
 1.59 AC  
 730-595  
 L. FRANKS  
 M. SCHREIF  
 559-1372  
 M.C. Egan  
 524-1  
 532-261  
 23.57 A  
 F.C. Kimmich  
 345-525 City of Akron  
 8 A.  
 395-354  
 45.23 A  
 City of Akron  
 342-225  
 36  
 84.53 A  
 F.P. May  
 29.61 A  
 603-701  
 667-47  
 F.J. MASA & M.E. KILMES  
 537-628  
 24 A  
 W.E. BISHOP  
 631-34  
 25.25 A  
 76.91  
 M. Danku  
 362-628, 630  
 26.62 A.  
 City of Akron  
 373-263  
 46.30 A  
 City of Akron  
 41  
 46  
 47  
 42  
 100 A  
 311-417  
 312-711  
 I.A.  
 265.  
 ESPINOZA  
 733-880  
 J.F. SKALA  
 487-287  
 657-205  
 474-5494  
 8280 AC  
 687-207  
 K. GERARD  
 J.D. ALBANO & D.M. KOCHIS  
 703-489  
 610-1035  
 6799 AC  
 589-88  
 J.A.L.E. STANINE  
 501-873  
 J.M. COLLIER  
 695-142  
 82 A  
 14.16 A.  
 H.W. Brown  
 J.E.  
 684-21  
 J.M. & B.R.  
 FRANCINO  
 268-408  
 11.23 A  
 City of Akron  
 Match Line



SEE DETAIL I-R  
AUBURN CORNERS

753-220  
WEST SIDE  
INSTITUTE  
OF TECHNOLOGY

S.H. 44

RAVENNA ROAD



TRACT TWO

SEC. 5

TRACT

THREE

51

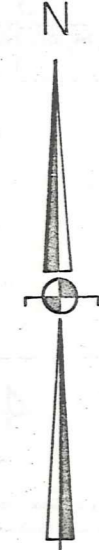
56

52

57

62

MATCH LINE



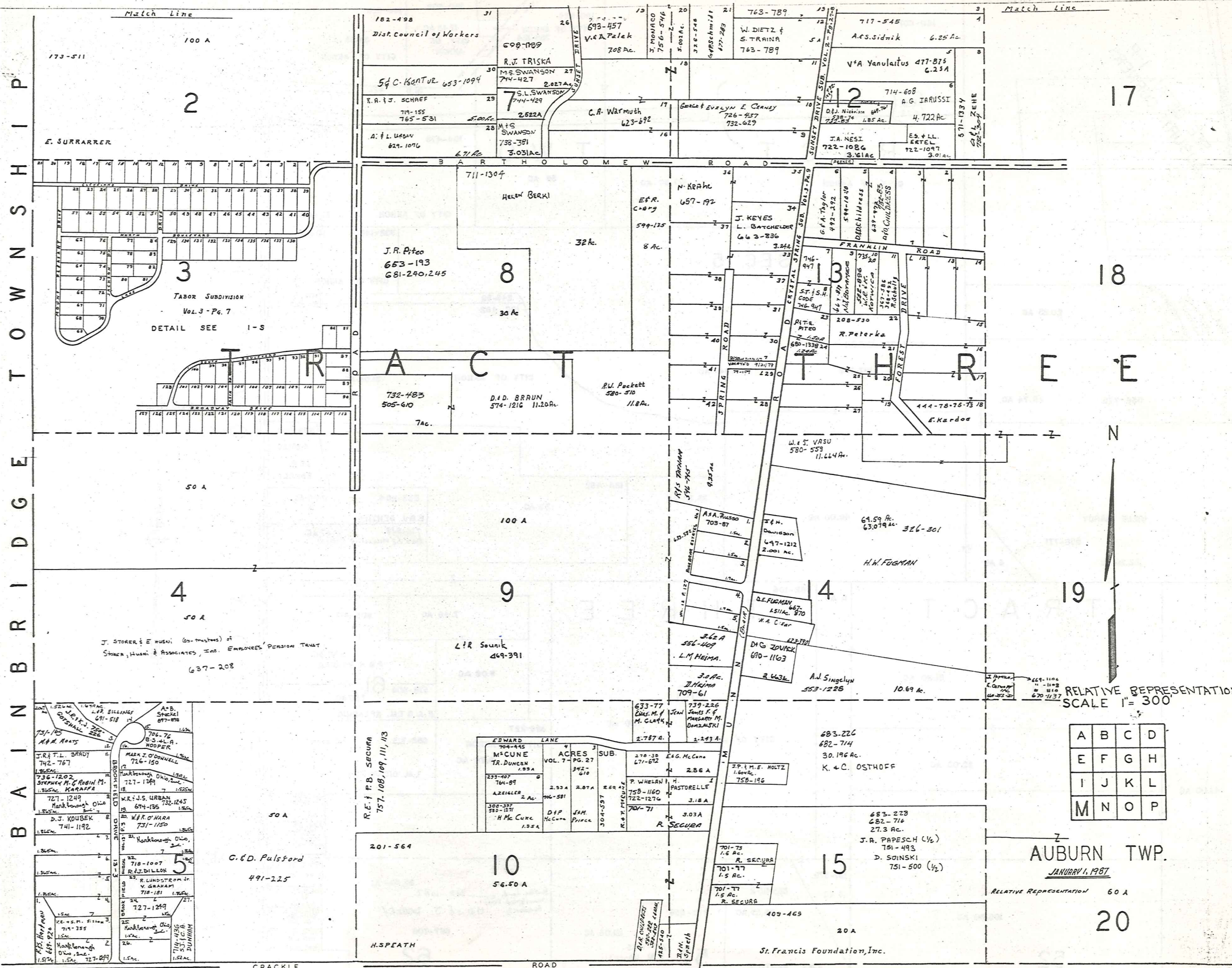
SCALE: 1" = 300'

A	B	C	D
E	F	G	H
I	J	K	L
M	N	O	P

AUBURN TOWNSHIP

JANUARY 1, 1987

RELATIVE REPRESENTATION

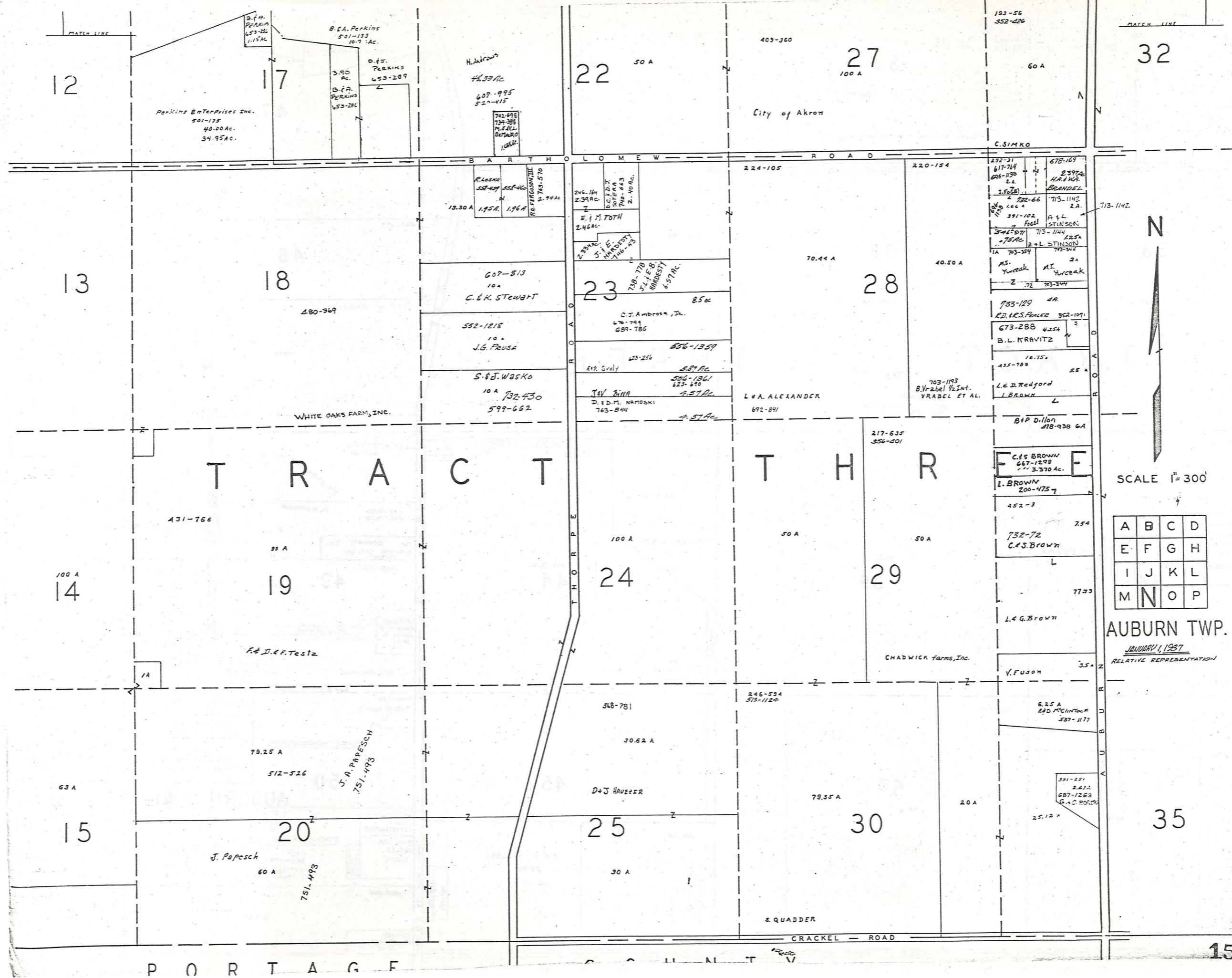


RELATIVE REPRESENTATION  
SCALE 1" = 300'

A	B	C	D
E	F	G	H
I	J	K	L
M	N	O	P

AUBURN TWP.  
JANUARY 1, 1987

RELATIVE REPRESENTATION 60 A



T R A C T                      T H R E E

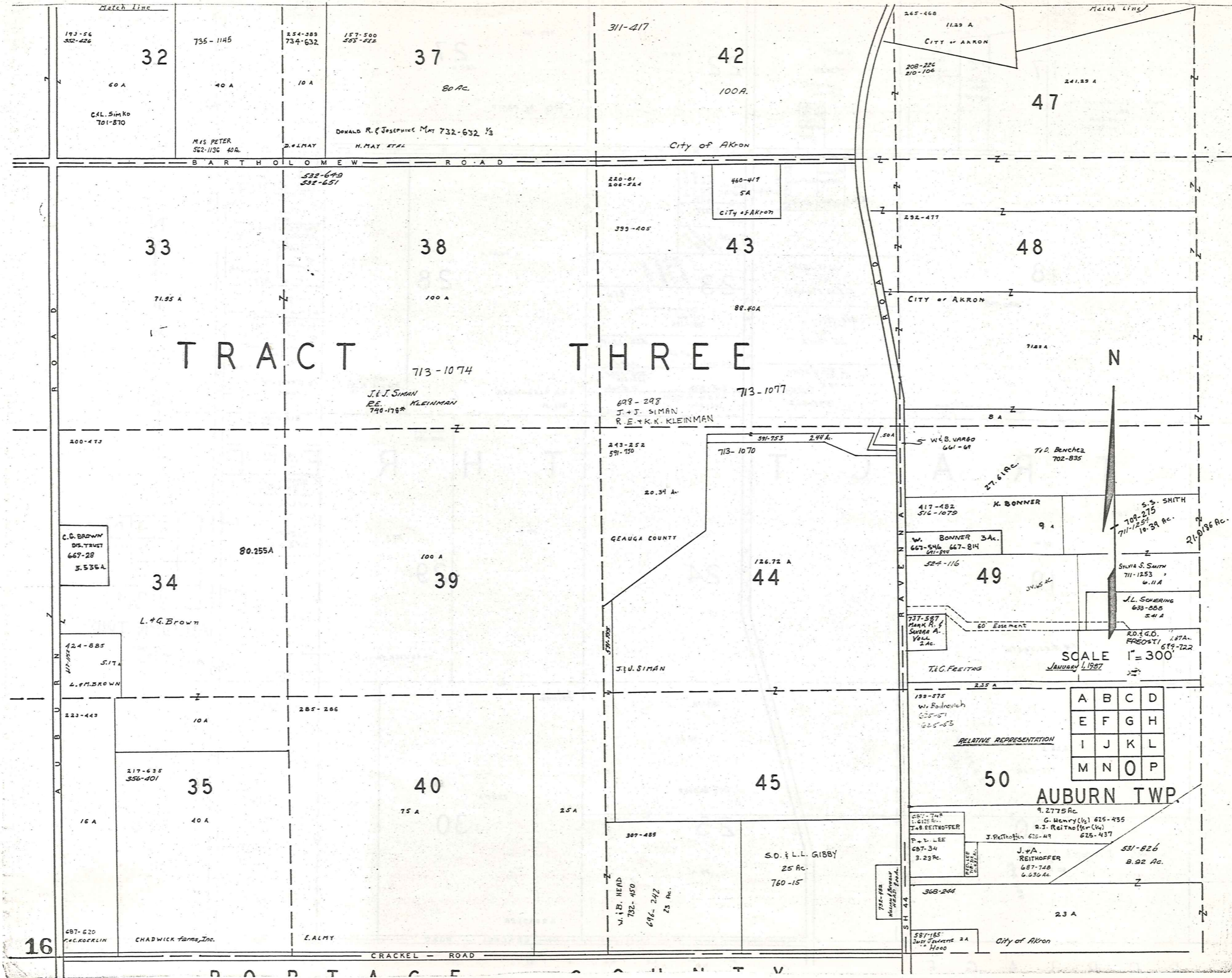


SCALE 1" = 300'

A	B	C	D
E	F	G	H
I	J	K	L
M	N	O	P

AUBURN TWP.

JANUARY 1, 1937  
RELATIVE REPRESENTATION



TRACT THREE

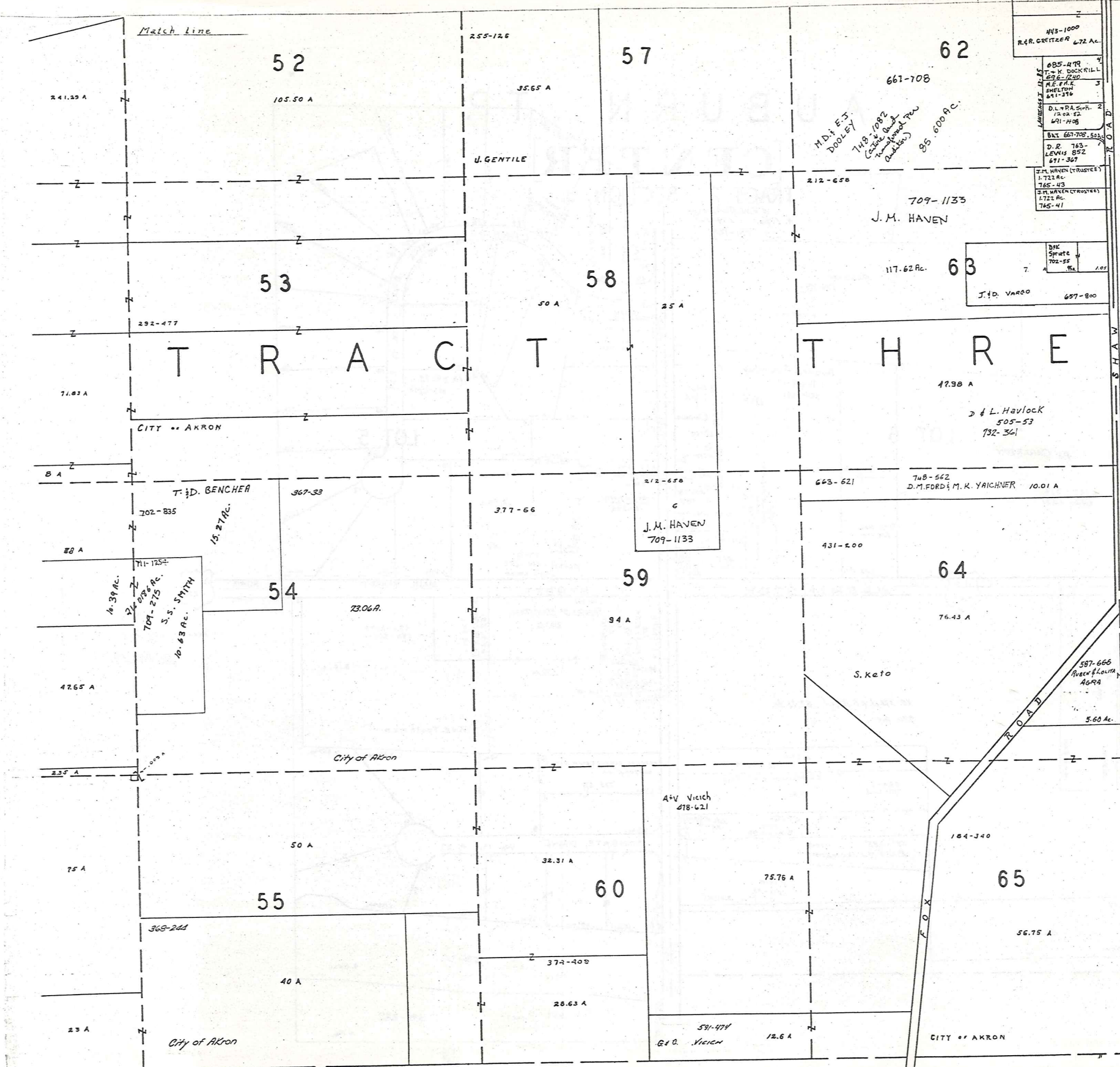


SCALE 1" = 300  
JANUARY 1, 1987

RELATIVE REPRESENTATION

A	B	C	D
E	F	G	H
I	J	K	L
M	N	O	P

AUBURN TWP.



Match Line

T O W N S H I P  
S H A W N E E S  
T O W N S H I P



SCALE 1" = 300'  
JANUARY 1, 1927

A	B	C	D
E	F	G	H
I	J	K	L
M	N	O	P

AUBURN TWP.  
RELATIVE REPRESENTATION



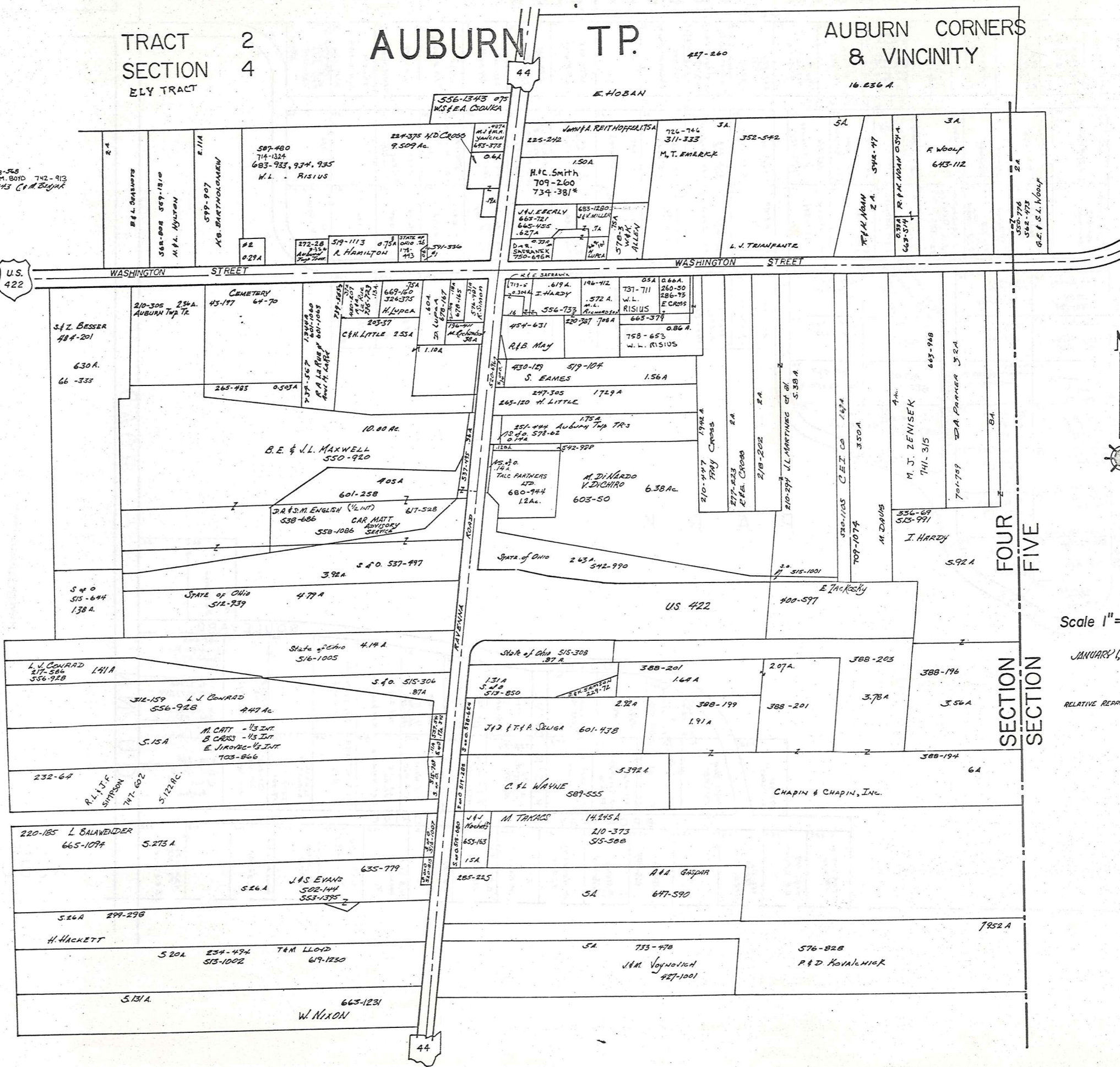
TRACT SECTION 2 4  
ELY TRACT

# AUBURN TP.

AUBURN CORNERS & VICINITY  
16.236 A.

718-548  
72-741 K.M. BOYD 742-913  
73-373-375 C.M. BEGAR

U.S. 422



Scale 1" = 2.5 ch. = 165 ft.

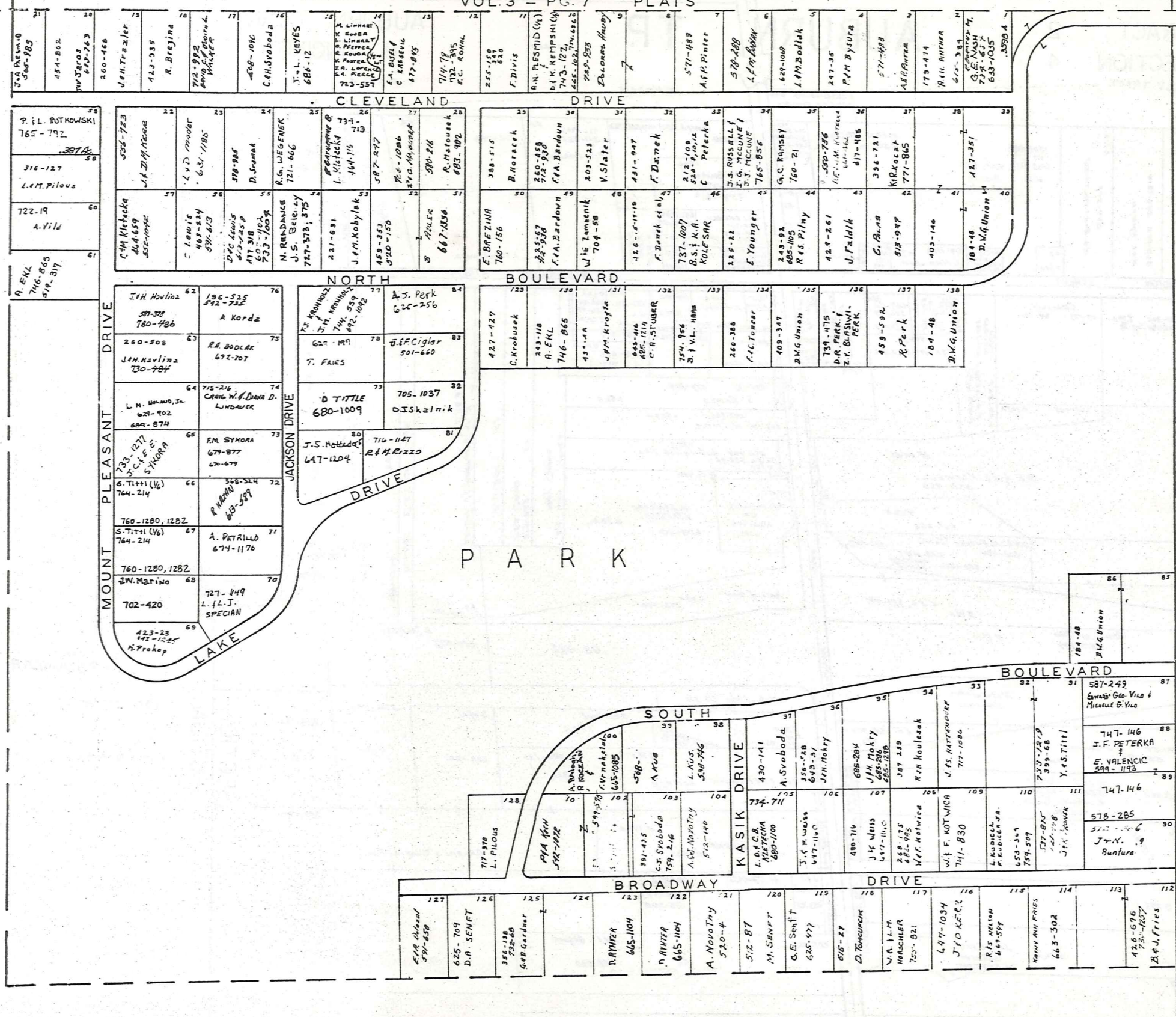
JANUARY 1, 1927

RELATIVE REPRESENTATION

SECTION FOUR  
SECTION FIVE

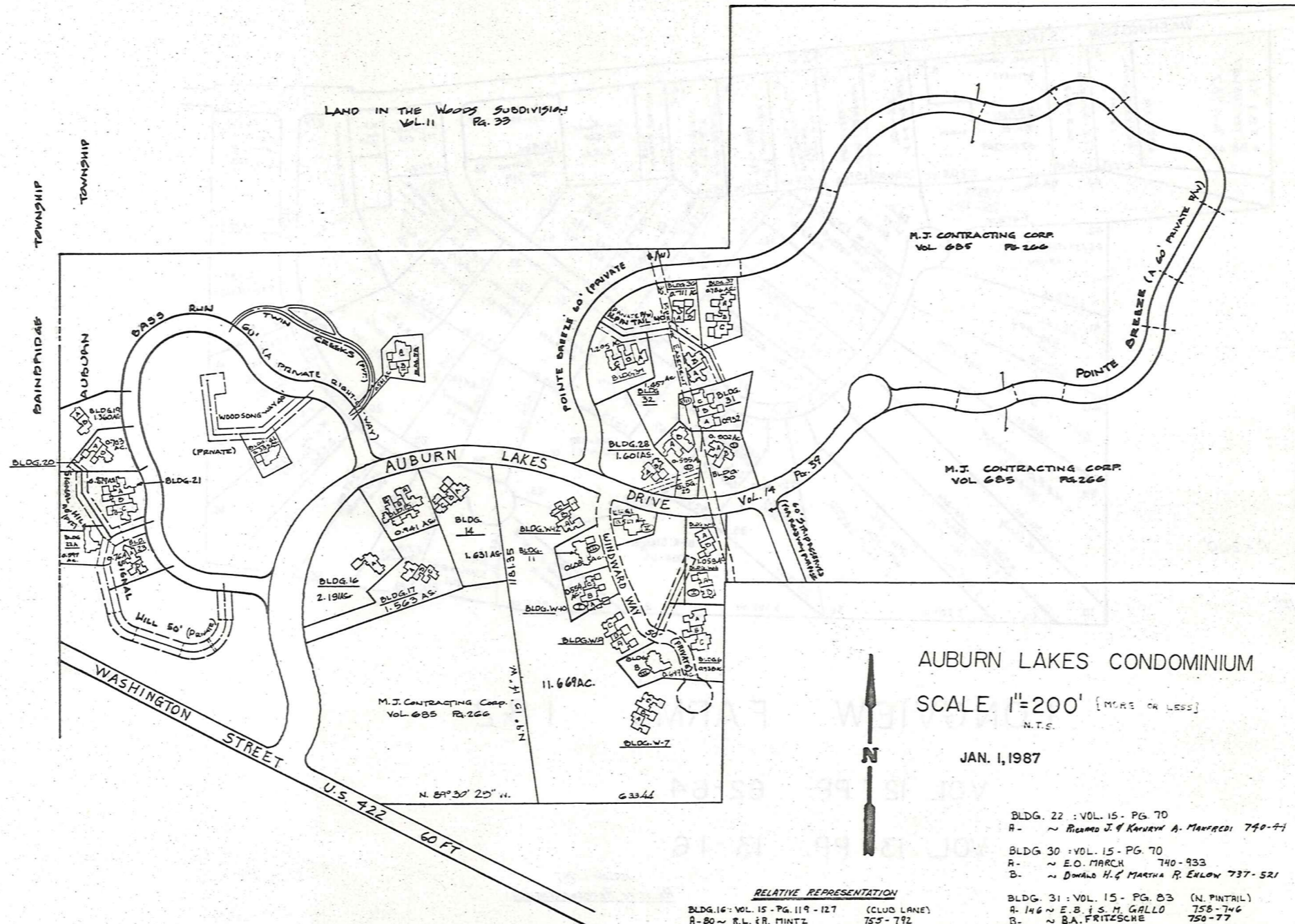
# TABOR SUBDIVISION

VOL. 3 - PG. 7 PLATS





LAND IN THE WOODS SUBDIVISION VOL. 11 Pg. 33

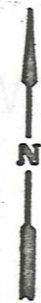


AUBURN LAKES CONDOMINIUM

SCALE 1"=200' [MORE OR LESS]

N.T.S.

JAN. 1, 1987



RELATIVE REPRESENTATION

BLDG. 16: VOL. 15 - PG. 119 - 127	(CLUB LANE)
A-80 ~ R.L. & R. MINTZ	757 - 792
BLDG. 36: VOL. 15 - PG. 119 - 127	(N. PINTAIL)
A-170 ~ D.H. & L.W. MATHEWS	756 - 779
B-172 ~ E.V. GORDON	759 - 1162
BLDG. 37: VOL. 15 - PG. 143 - 146	
A- ~	
B- ~	
C- ~	
BLDG. 58: VOL. 15 - PG. 149 - 153	
A- ~	
B- ~	
C- ~	

BLDG. 22 : VOL. 15 - PG. 70  
A- ~ RICARDO J. & KATHRYN A. MANFREDI 740-71

BLDG. 30 : VOL. 15 - PG. 70  
A- ~ E.O. MARCH 740-933  
B- ~ DONALD H. & MARTHA R. ENLOW 737-521

BLDG. 31 : VOL. 15 - PG. 83 (N. PINTAIL)  
A- 146 ~ E.B. & S.M. GALLO 758-746  
B- ~ B.A. FRITZSCHE 750-777  
C- ~ G.L. & R.M. RAY 745-1340

BLDG. 23: VOL. 15 - PG. 91 (SIGNAL HILL)  
A-112 ~ T.D. EVANS 749-865  
B-114 ~ D.L. & M.C. BOOTHER 760-4

BLDG. 32: VOL. 15 - PG. 91  
A-152 ~ D.C. & R.G. SKINNER 751-889  
B-154 ~ W.K. OLIVIER 751-554

- AUBURN LAKES CONDO ~ WINDWAY WAY (PRIVATE):
- W-1: VOL. 15 - PG. 1  
A-66 ~ M.F.N. LAVIN 718-101
- W-2:  
A-64 ~  
B-62 ~  
C-60 ~
- W-3: VOL. 14 - PG. 110 - 115  
A-54 ~ P. DIGRASI 706-814  
B-52 ~ W.J. RINI 708-427
- W-4: VOL. 14 - PG. 110 - 115  
A-50 ~ D. DOLCH 718-1127  
B-48 ~ D. & G. RIETHMILLER 705-649
- W-5:  
A-58 ~  
B-56 ~
- W-6: VOL. 15 - PG. 1  
A-46 ~ D.J. MATS 718-203  
B-44 ~ WAYNE L. RISIUS 735-1292  
C-42 ~ T.L. & L.M. MUSHKUSH 748-209

- W-7: VOL. 14 - PG. 72  
A-40 ~ E. KRAMES 703-349  
B-38 ~ H. EPPRECHT 700-1300  
C-36 ~ J.N. & C. HOLYLAND 714-720
- W-8: VOL. 14 - PG. 130 - 136  
A-34 ~ R.F.S. MERIAN 715-102  
B-32 ~
- W-9: VOL. 14 - PG. 72  
A-30 ~ B.S. FERBER 713-468  
B-28 ~ H.J. HOLZHEIMER 705-361  
C-26 ~ CAROL L. MANIER 733-1031
- W-10: VOL. 14 - PG. 110 - 115  
A-24 ~ R.H. AMOS 707-370  
B-22 ~ K.D. WERNER 707-1185  
C-20 ~ M.J. WIELAND 717-745; 743-263
- W-11: VOL. 14 - PG. 130 - 136  
A-18 ~ M.F.L. VITALE 716-1917  
B-16 ~
- W-12: VOL. 14 - PG. 72  
A-14 ~ R.J. SCIULLI 701-737  
B-12 ~ 212 EAST OHIO SERV. CORP. 700-1339  
C-10 ~ STEPHEN M. CHARLOTTE T. GUN 727-160

BLDG. 21: VOL. 14 - PG. 124 / VOL. 15 - PG. 21  
A-100 ~ V.L. MCKEE 749-1210  
B- ~ R.R. REMLEY JR. 750-665  
C-104 ~ W.L. RISIUS 757-150

BLDG. 20: VOL. 14 - PG. 141 - 144  
A- ~ MARK & NANCY MILLS 727-681  
B- ~ R.G. ROBERTS 716-97

BLDG. 34: VOL. 15 - PG. 1  
A- ~ STALEY & MAJORIE BACH 719-809  
B- ~ LEADCO ASSOCIATES 734-1259  
C- ~ RAYMOND J. & CAROL J. SRP 735-979

UNIT 15: VOL. 15 - PG. 17 (COVE COURT)  
A-74 ~ T.D. & D.R. CLARK 765-634  
B- ~ ROBERT J. KIELER 739-750  
C- ~ LEADWORKS, INC. 763-151

UNIT 19: Vol. 15 pg. 27  
A- ~ BARBARA MARIE SIMS 724-757  
B- ~ M. JACQUELINE HARRIS 726-373  
726-1081

BLDG. (UNIT) 14: VOL. 15 - PG. 48 TO 52  
A-68 ~ C.J. & R.D. MCBRIDE 749-652  
B- ~ THOMAS & GLORIA CAVES 729-1250  
C- ~ DONALD & DORIS WISE 730-944

UNIT 28 Vol. 15-56  
A- DOUGLAS & BAMBIE CHARD 730-452  
B- HOWARD B. & SHIRLEY D. PARR 733-492

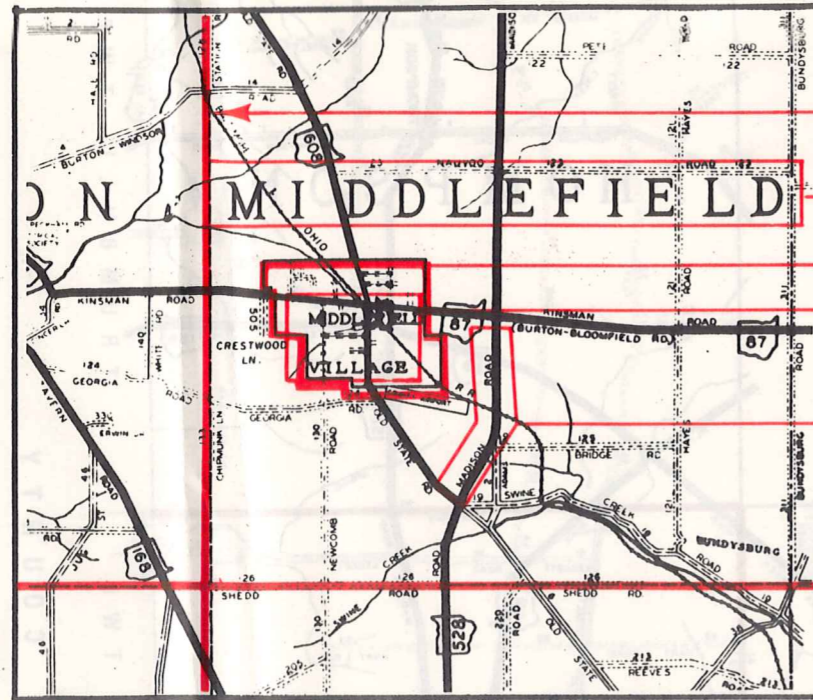
UNIT 41 Vol. 15 pg. 60-67  
A ROBERT & GERARDINE M. VERANAR 734-126

UNIT 29: VOL. 15 - PG. 60 (S. PINTAIL)  
A- ~ JOEL J. & ZELMA L. LIPMAN 736-927  
B-144 ~ T.W. & B.L. HUNTER 763-211

UNIT 17: VOL. 15 - PG. 91 (CLUB LANE)  
A-84 ~ T.G. KUHNLE 757-1026  
B-86 ~ S. THOMPSON 771-867; 742-562  
C-88 ~ H.T. FAY 748-810

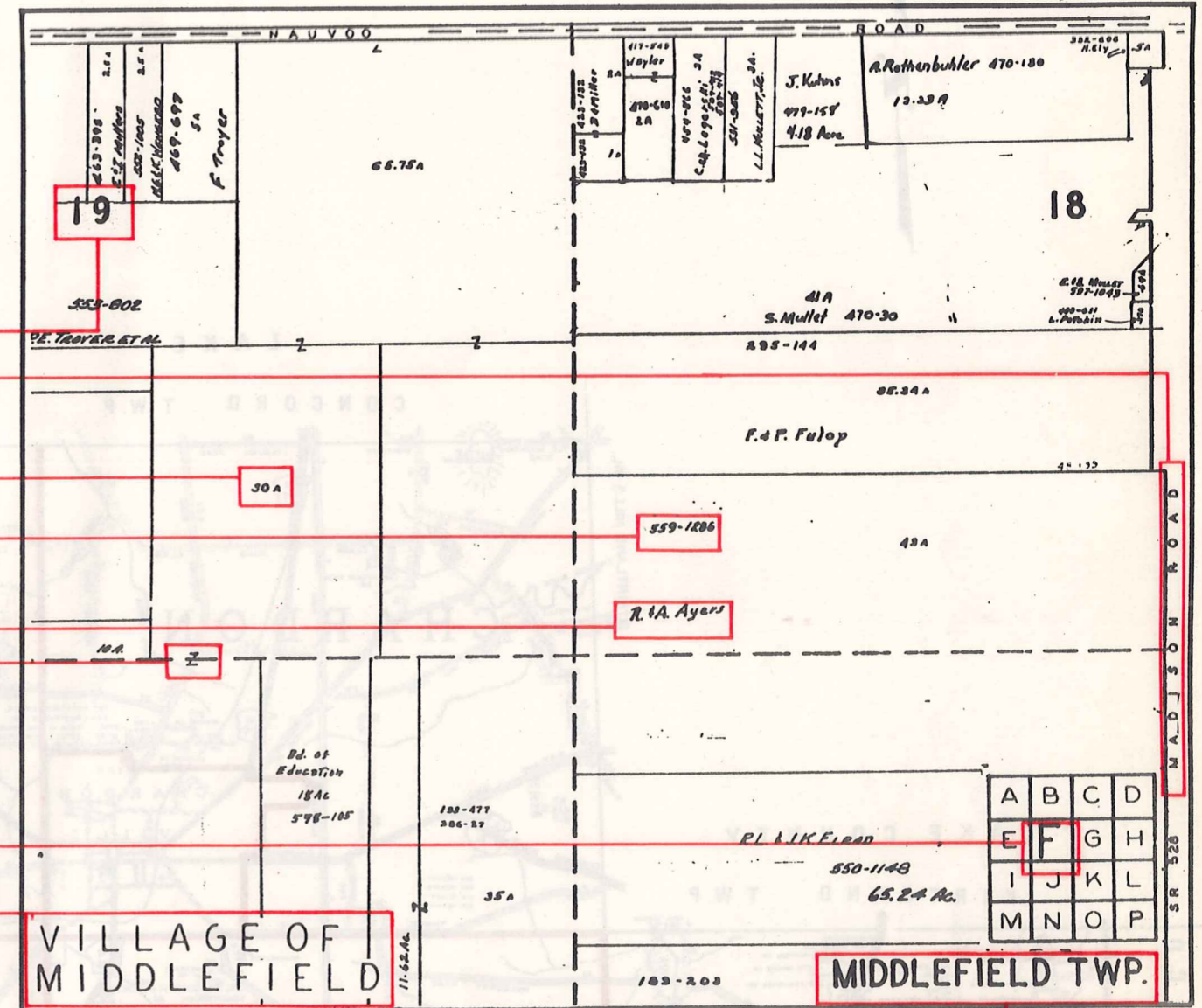
# Explanation and Use Sheet for Geauga County, Ohio

SAMPLE (PARTIAL) COUNTY INDEX MAP



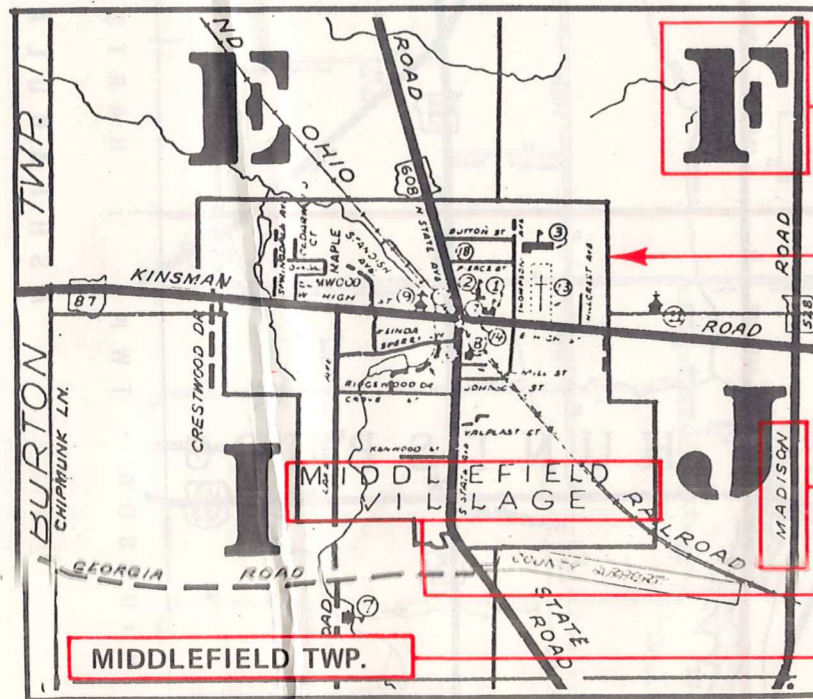
- Township Boundary
- Township Name
- Village Boundary
- Village Name
- Tract Lot Number
- Street Name
- Acreage
- Deed Book & Page
- Owners Name
- Denotes Continous Ownership

SAMPLE (PARTIAL) MAP PAGE



- Map Page Number
- Village Name
- Village Boundary
- Township Name

SAMPLE (PARTIAL) MUNICIPALITY INDEX MAP



- Street Name
- Village Name
- Township Name

## USE OF THE MAP VOLUME

1. LOCATE THE GENERAL AREA OF INTEREST ON THE COUNTY INDEX MAP, ATLAS PAGE 'B', AND NOTE THE MUNICIPALITY NAME (TOWNSHIP OR VILLAGE).
2. REFER TO THE TABLE OF CONTENTS, ATLAS PAGE 'C', AND NOTE THE BEGINNING ATLAS PAGE NUMBER FOR THE MUNICIPALITY OF INTEREST.
3. TURN TO THE PAGE INDICATED. ON THIS PAGE WILL APPEAR AN INDEX MAP FOR THAT MUNICIPALITY.
4. LOCATE THE GENERAL AREA OF INTEREST AND NOTE THE MAP PAGE NUMBER. THIS MAY BE EITHER A LETTER OR A NUMBER.
5. MAP PAGES ARE IN ALPHABETICAL (OR NUMERICAL) SEQUENCE FOLLOWING THE MUNICIPALITY INDEX MAP. FOLLOW SEQUENCE TO THE MAP PAGE INDICATED.
6. LOCATE SPECIFIC PARCEL OF INTEREST AND NOTE THE DESIRED INFORMATION.

NOTE: ON SOME MAPS YOU MAY BE REFERRED TO A DETAIL SHEET SHOWING AN ENLARGEMENT OF THE AREA. THESE MAPS ARE FOUND AT THE END OF THE REGULAR MAP PAGES IN EACH MUNICIPALITY IN EITHER ALPHABETICAL OR NUMERICAL SEQUENCE.

NOTE: CHARDON VILLAGE HAS TITLE SHEETS. TO LOCATE OWNERS NAME, NOTE THE PARCEL NUMBER, REFER TO THE TITLE PAGE FOLLOWING THE MAP OF INTEREST, FOLLOW NUMERICAL SEQUENCE TO THE PARCEL NUMBER OF INTEREST AND NOTE THE DESIRED INFORMATION. IN ALL OTHER MUNICIPALITIES THE OWNERS NAME APPEARS ON THE MAP PAGE.

This book is the property of REAL ESTATE DATA, INC. and is distributed by REDI under a leasing arrangement requiring return to REDI upon termination of the lease. REDI reserves the right to reclaim this book if found in the possession of any firm or person where possession was obtained through any unauthorized source.